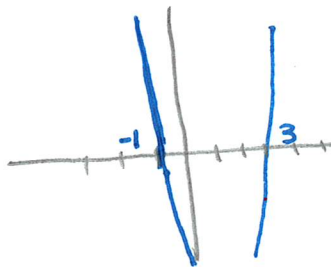


Pg 4

- 19 Graph in desmos
must be C or D



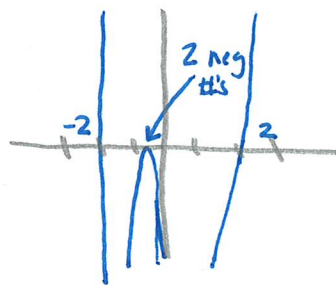
C

- 20 $f(x) = x^3 - 13x - 15$ Pro tip "remainder" means plug in opposite
 $x+2$ means -2

$$f(-2) = (-2)^3 - 13(-2) - 15 = 3$$

- 21 Plug into desmos and see!!

B



Pro tip
ZOOM

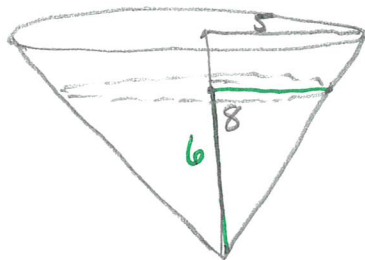
- 22 $y = |x|$ ← 3 ↑ 2

$$y = |x+3| + 2$$

B

Pro tip () make #'s liars

- 23 Draw



$$V = \frac{1}{3} \pi r^2 h$$

$$h = 6$$

$$r = \frac{6}{8} = \frac{x}{5}$$

$$r = 3.75$$

$$x = 3.75$$

$$V = \frac{1}{3} \pi (3.75)^2 6 = 88.34$$

- 24 Desmos (Easy)

B

- 25 Desmos

C $2x+3$

$$-1.5 = -\frac{3}{2}$$

